

Columbia River Basin Water Management Program

Columbia Basin Development League
Annual Meeting

November 1, 2011
Moses Lake, Washington



Outline

- Background
- Potholes Supplemental Feed Route
- Lake Roosevelt Incremental Storage Releases
- Weber Siphon Complex
- Coordinated Conservation
- Odessa Subarea Special Study
- Columbia River Mainstem Off-Channel Appraisal Study



Columbia River Partnership

- December 2004 – Columbia River Initiative Memorandum of Understanding
- February 2006 – State's Columbia River Water Resource Management Act

**Memorandum of Understanding
Concerning the State of Washington's
Columbia River Initiative**

PARTIES

This Memorandum of Understanding (MOU) is entered into between the State of Washington (State), acting through the state agencies which are signatories hereto; the Pacific Northwest Region of the U.S. Bureau of Reclamation (Reclamation); and the South Columbia Basin Irrigation District, the East Columbia Basin Irrigation District, and the Quincy-Columbia Basin Irrigation District (collectively, the Districts). The State, Reclamation, and the Districts are collectively referred to as the "parties" herein.

EFFECT

Section 1. This MOU is intended parties to advance the actions described in this MOU. This MOU does not constitute an enforceable contract or any right in equity by any party against another party. This MOU shall not be construed to modify or noncompliance of the parties to the jurisdiction of an procedures presently available to the parties to the jurisdiction of an procedures presently available to the parties to the jurisdiction of an procedures presently available to the parties to the jurisdiction of an

Section 2. Nothing in this MOU shall modify or noncompliance of the parties to the jurisdiction of an procedures presently available to the parties to the jurisdiction of an procedures presently available to the parties to the jurisdiction of an

PURPOSE AND OBJECTIVES

Section 3. The parties will use the secure economic and environment federal Project and along the main described in this MOU.

Section 4. Through the Columbia the mainstem of the Columbia River

CERTIFICATION OF ENROLLMENT
ENGROSSED SECOND SUBSTITUTE HOUSE BILL 2860

Chapter 6, Laws of 2006
59th Legislature
2006 Regular Session
COLUMBIA RIVER BASIN--WATER SUPPLY
EFFECTIVE DATE: 7/01/06

Passed by the House February 13, 2006
Yeas 94 Nays 4
FRANK CHOFF
Speaker of the House of Representatives

Passed by the Senate February 14, 2006
Yeas 48 Nays 0
BRAD OWEN
President of the Senate
Approved February 16, 2006.

CERTIFICATE
I, Richard Nafziger, Chief Clerk of the House of Representatives of the State of Washington, do hereby certify that the attached is **ENGROSSED SECOND SUBSTITUTE HOUSE BILL 2860** as passed by the House of Representatives and the Senate on the dates hereon set forth.

RICHARD NAFZIGER
Chief Clerk

FILED
February 16, 2006 - 2:45 p.m.

CHRISTINE GREGOIRE
Secretary of State
State of Washington



Columbia River Partnership Studies

- **Potholes Supplemental Feed Route**

CRI MOU Section 17

- **Lake Roosevelt Drawdown**

CRI MOU Sections 9 - 14

- **Odessa Subarea Special Study**

CRI MOU Section 15

- **Columbia River Mainstem Off-Channel Storage Study**

CRI MOU Section 6



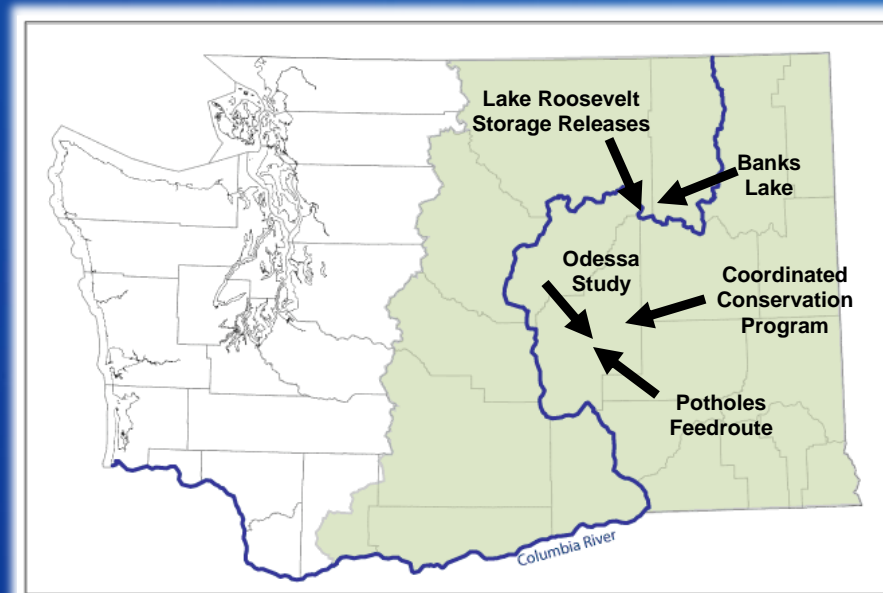
Columbia River Basin Water Management (Development) Act - 2006

- Ecology directed to aggressively pursue development of new water supplies for both instream and out-of-stream uses
- Significant investment in new storage and conservation
 - Capital: authorization for bonds of up to \$200 million
 - Operating: \$2.1 million and 15 FTEs
- 2/3 of funds for study and construction of new storage
 - 1/3 of new storage for improving streamflows to benefit fish
 - 2/3 of new storage for new out-of-stream uses
- 1/3 of funds for conservation and all other water supply purposes
- Legislative report on water supply and demand every five years

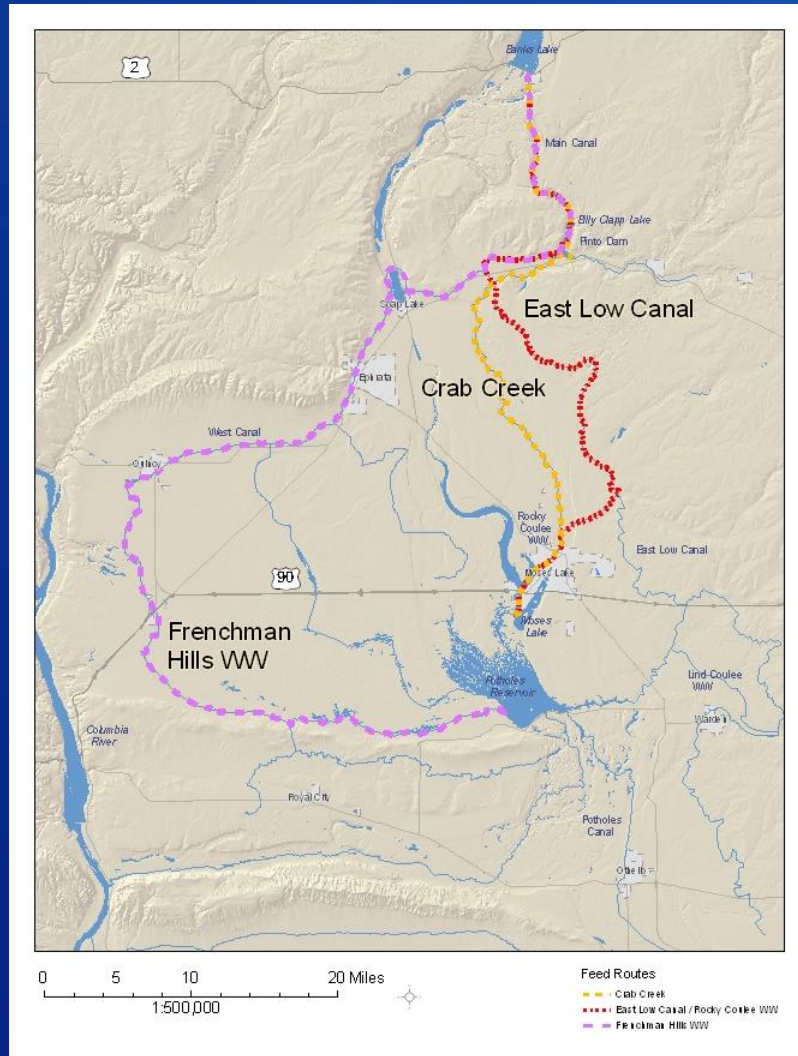


Approach to Finding Alternatives to Groundwater for Odessa

- Supplemental Feed Route and Other Infrastructure Upgrades
- Lake Roosevelt Incremental Storage Releases
- Coordinated Conservation Plan
- Odessa Subarea Special Study
 - Banks Lake Re-Operation
 - Rocky Coulee Dam & Reservoir



Potholes Supplemental Feed Route



1) Frenchman Hills Wasteway

Additional Capacity
25,000 acre-feet

2) Crab Creek

Annual Capacity
100/500 cfs
126,000 acre-feet

Spring Flow Capacity
500 cfs
54,000 acre-feet

Potholes Supplemental Feed Route (cont)



1) Road C

2) Brook Lake

4x4 Gate & Outlet



3) Road 16

4) Acquisition

Potholes Acquisition Status

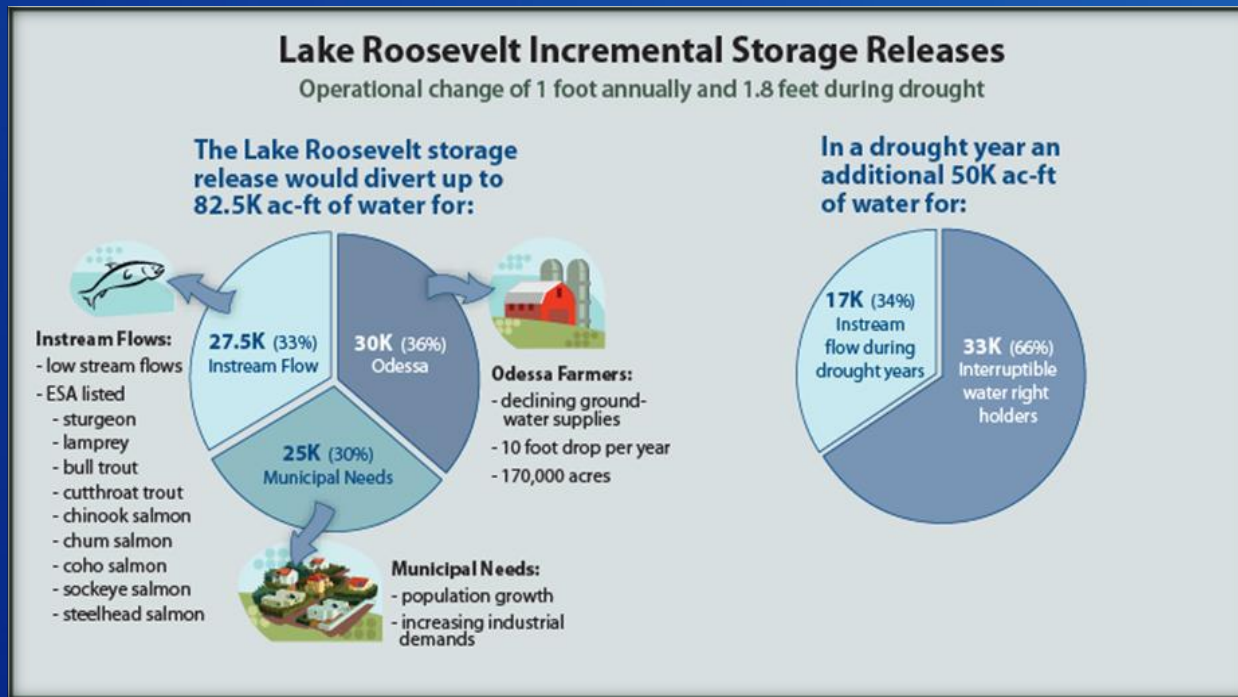
- 64 Landowners
- 123 Parcels of Land
- 22 Transactions Completed, include multiple parcels
- All landowners contacted
- Target completion for acquisition Fall 2012



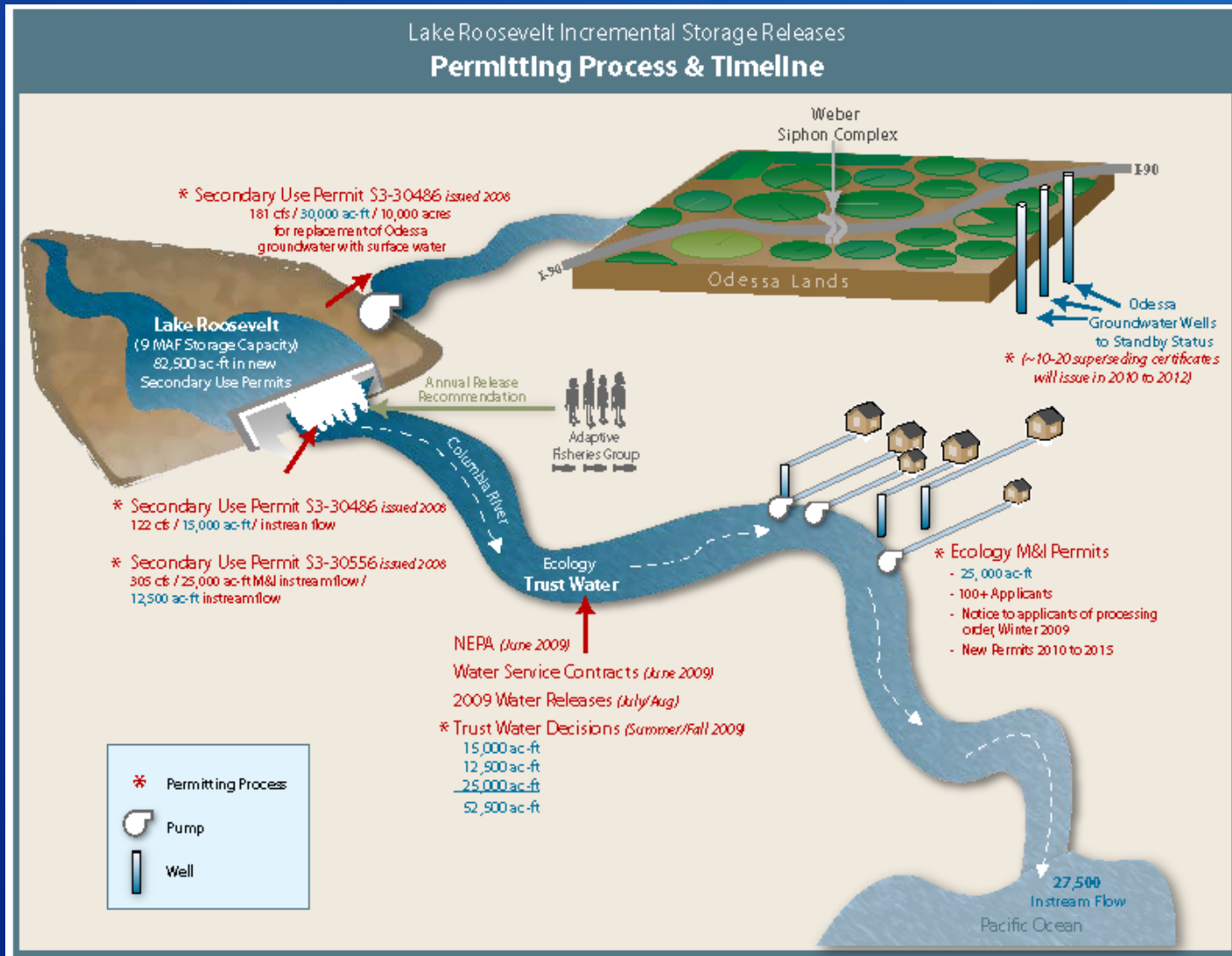
Lake Roosevelt Storage Release

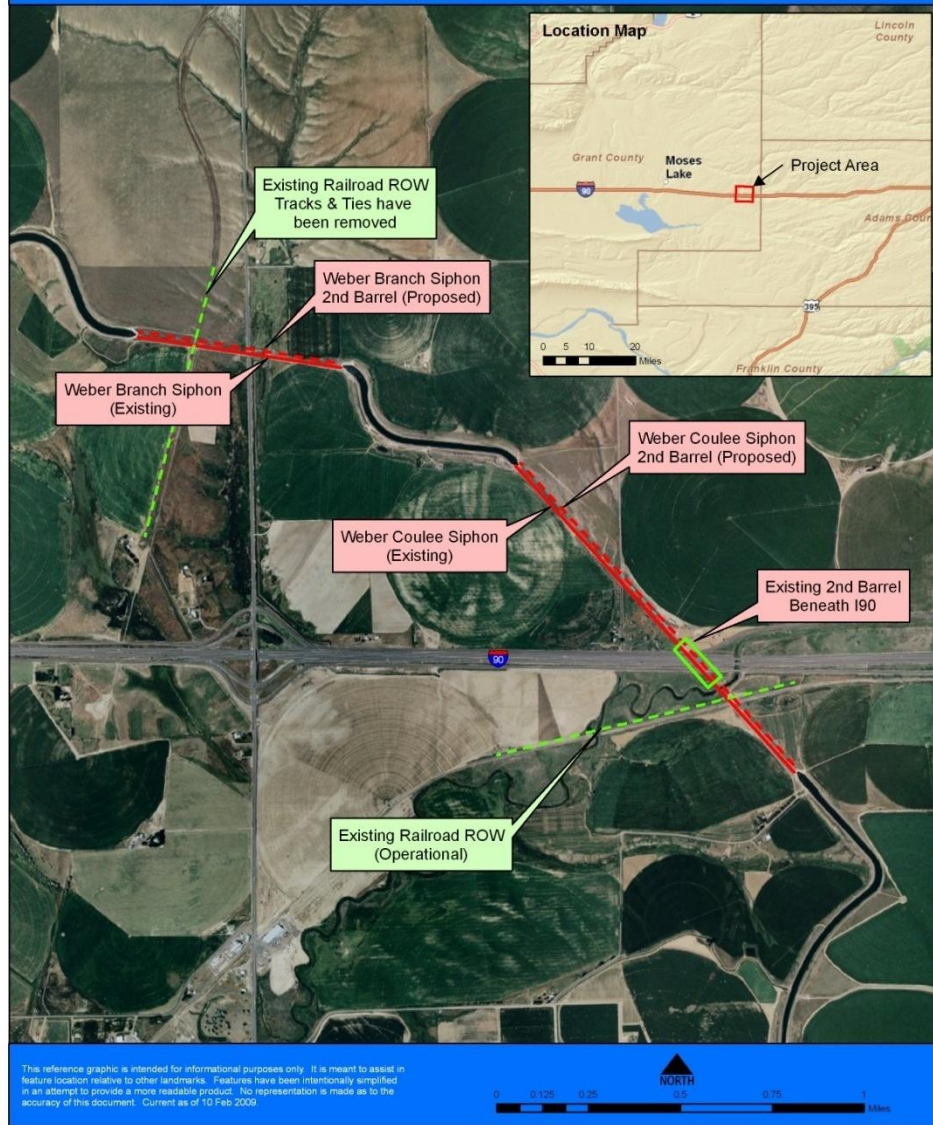
30,000 Acre-Feet of Water for the Odessa Subarea.

- First large block of surface water for ground water replacement.
- Weber Siphon under construction. It will allow the delivery of 21,000 acre-feet to the southern portion of the Odessa Subarea



Lake Roosevelt Storage Release





Weber Complex



Weber Siphon Status

- 98% Complete
- 4 Segments Remaining

