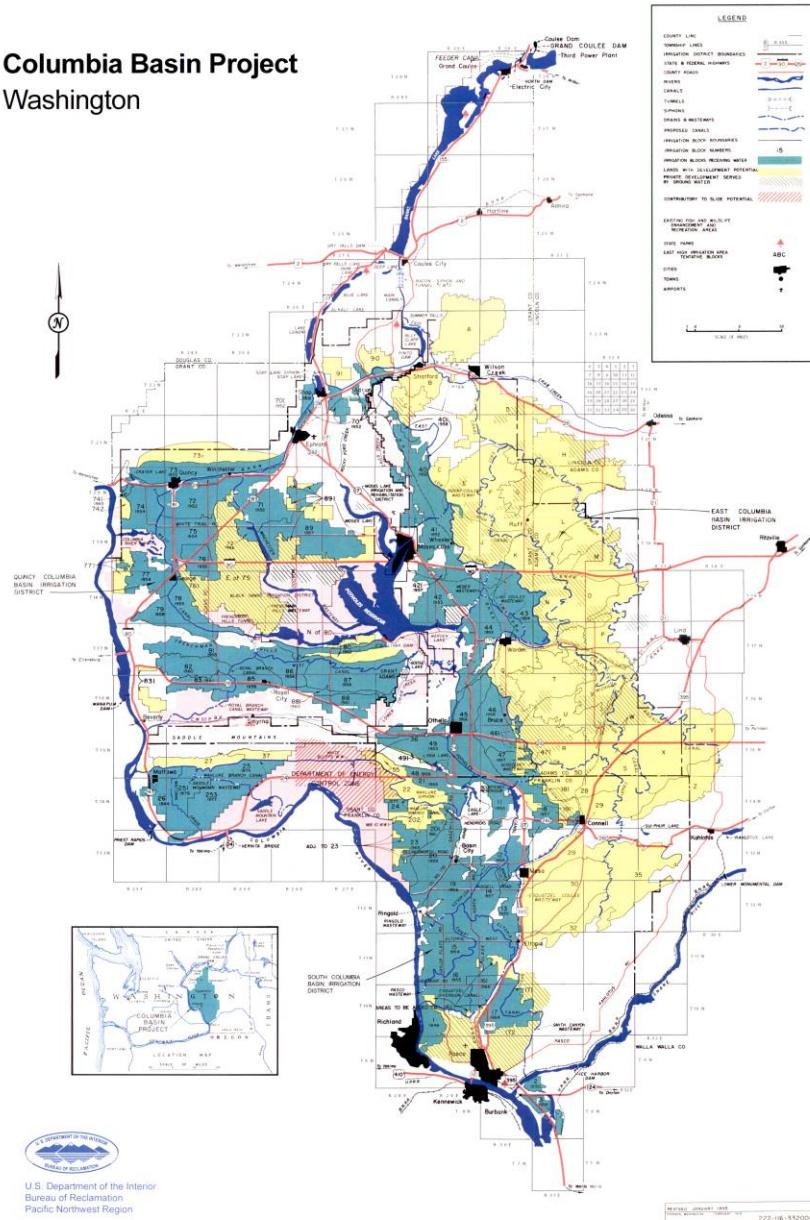

A VIEW FROM THE SPILLWAY

Craig Simpson, PE
Secretary-Manager
East Columbia Basin Irrigation District

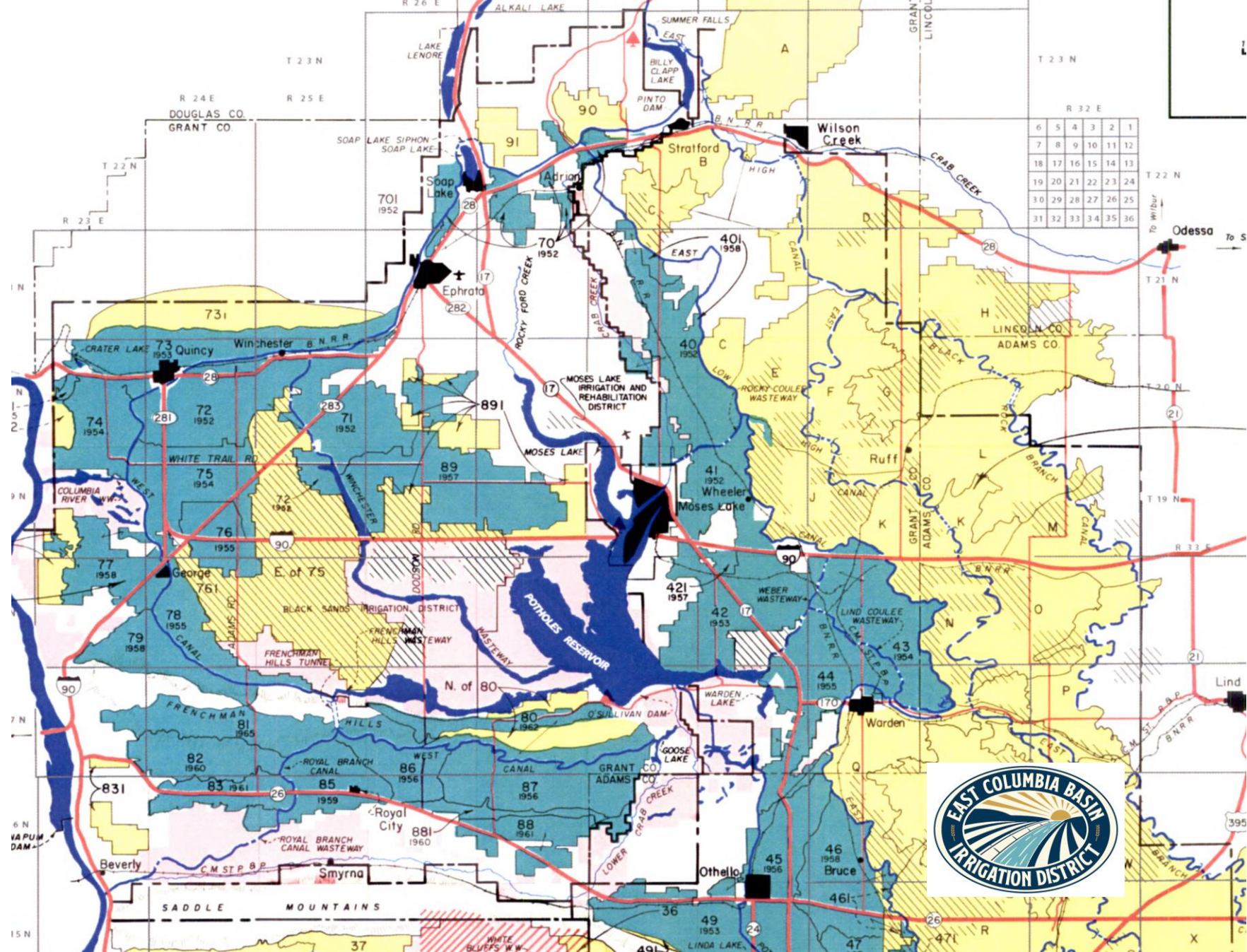


Columbia Basin Project
Washington



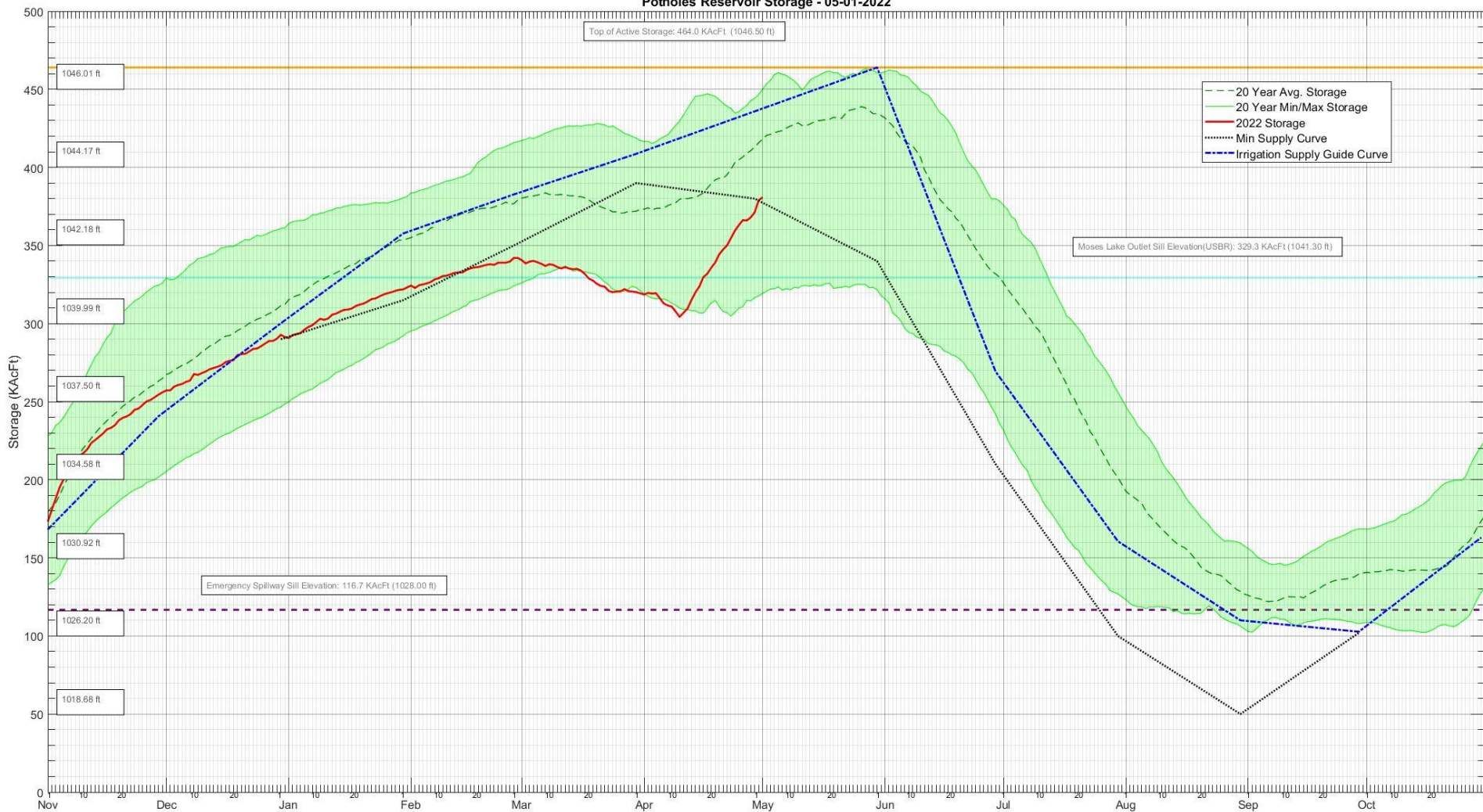
Potholes Reservoir Spillway Evacuation Route







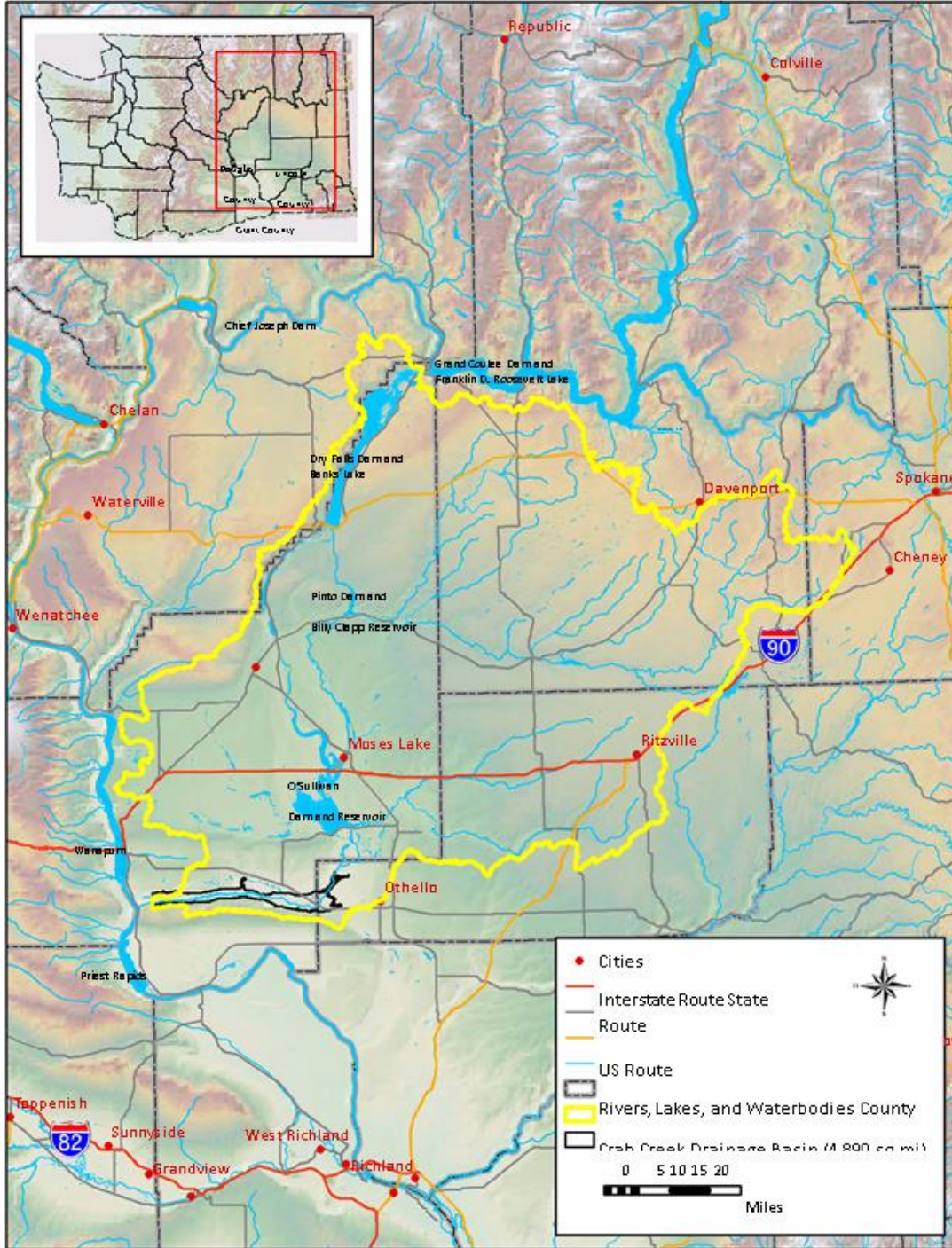
Potholes Reservoir Storage - 05-01-2022











Appraisal Evaluation of Columbia River Mainstem Off- Channel Storage Options



Questions/Comments?

Craig Simpson, PE
Secretary-Manager
East Columbia Basin Irrigation District
55 N 8th Ave, PO Box E
Othello, WA 99344
csimpson@ecbid.org
509-488-9671
ecbid.org

