



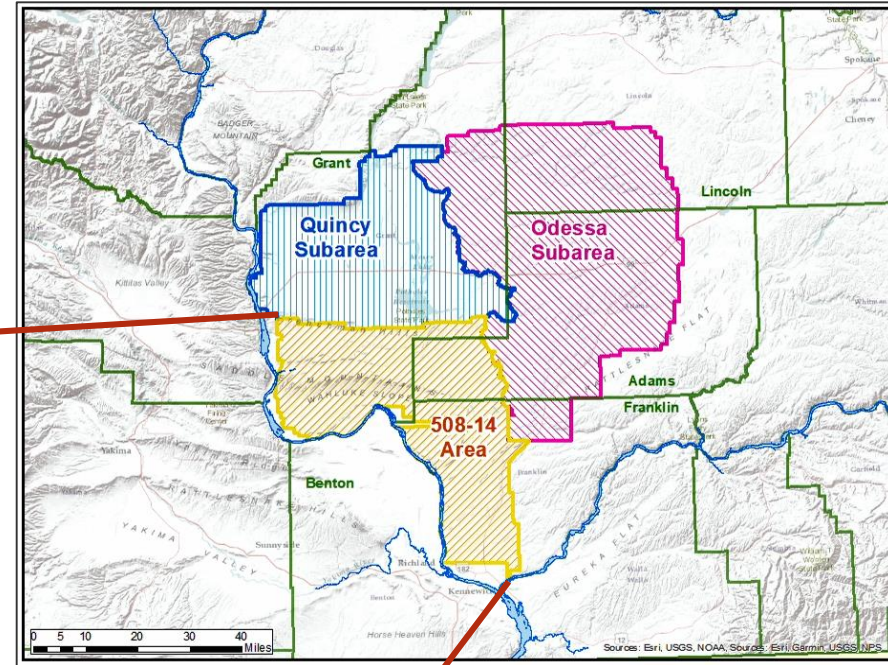
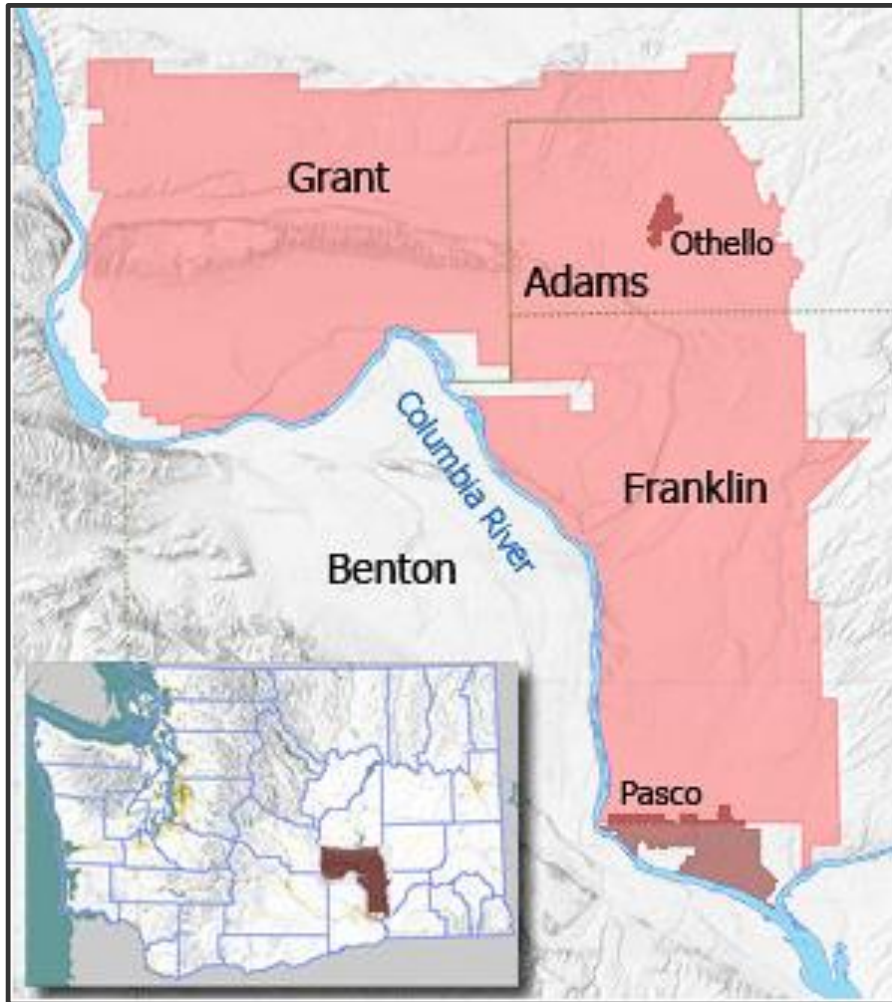
Pasco Basin Groundwater Management Efforts

Columbia Basin Development League

November 14, 2023

G. Thomas Tebb
Director, Office of Columbia River
Department of Ecology

Pasco Basin Area

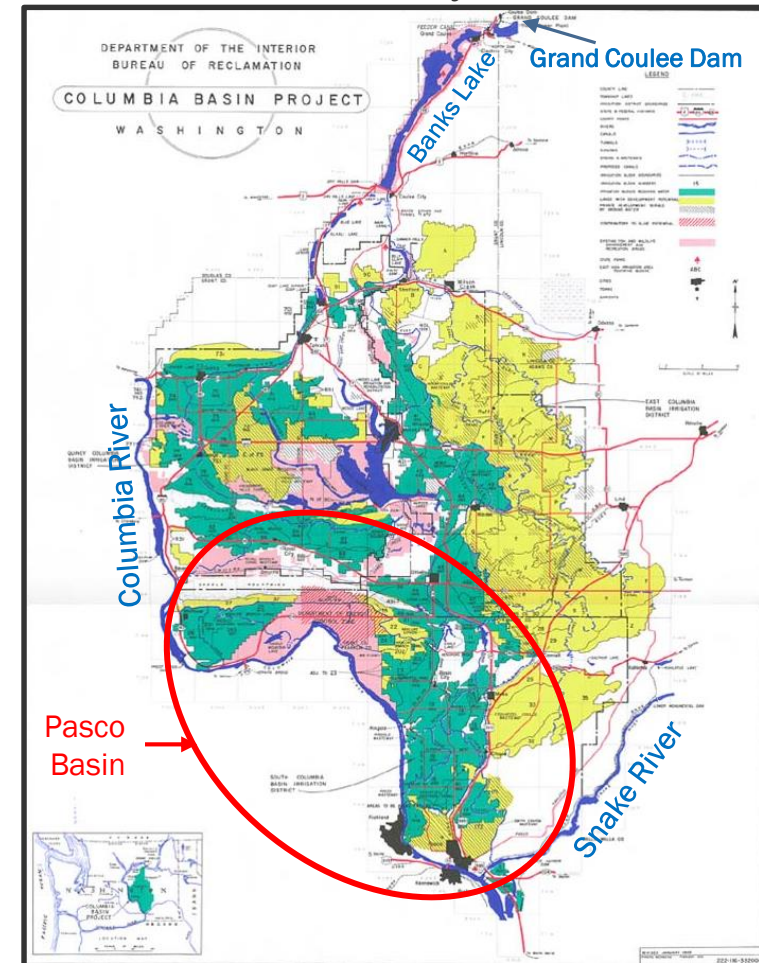


Columbia Basin Project Irrigation

- Columbia Basin Act – early 1940s
- Irrigation in the basin relies on surface water from Federal Project (~680,000 acres)
- Return flows seep into ground and commingled with natural groundwater
- State issues withdrawal of groundwater in coordination with Reclamation, later designated as interim rule 508-14 WAC

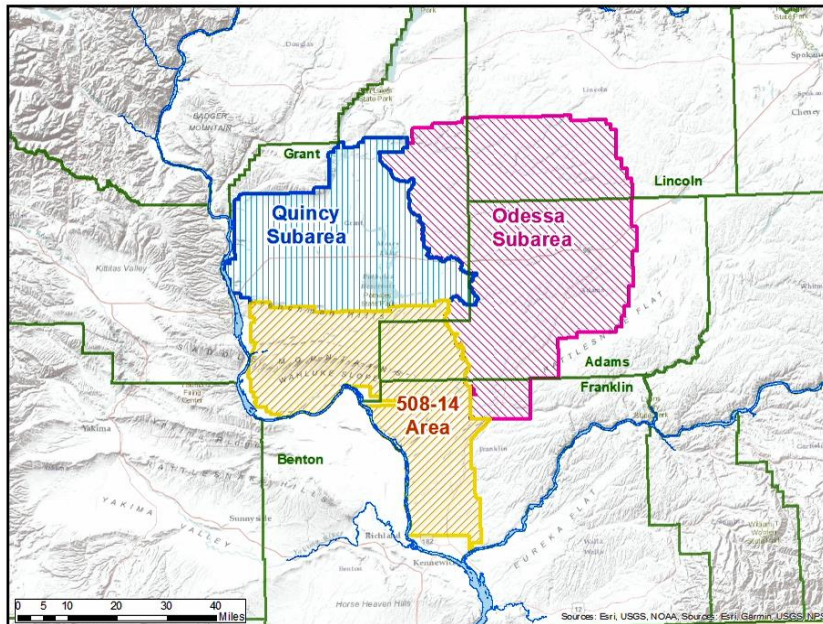
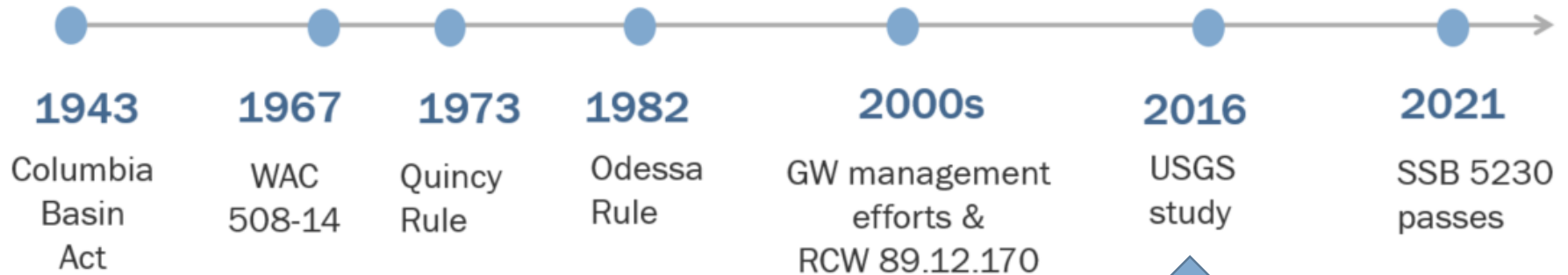


Bureau of Reclamation
Federal Columbia Basin Project



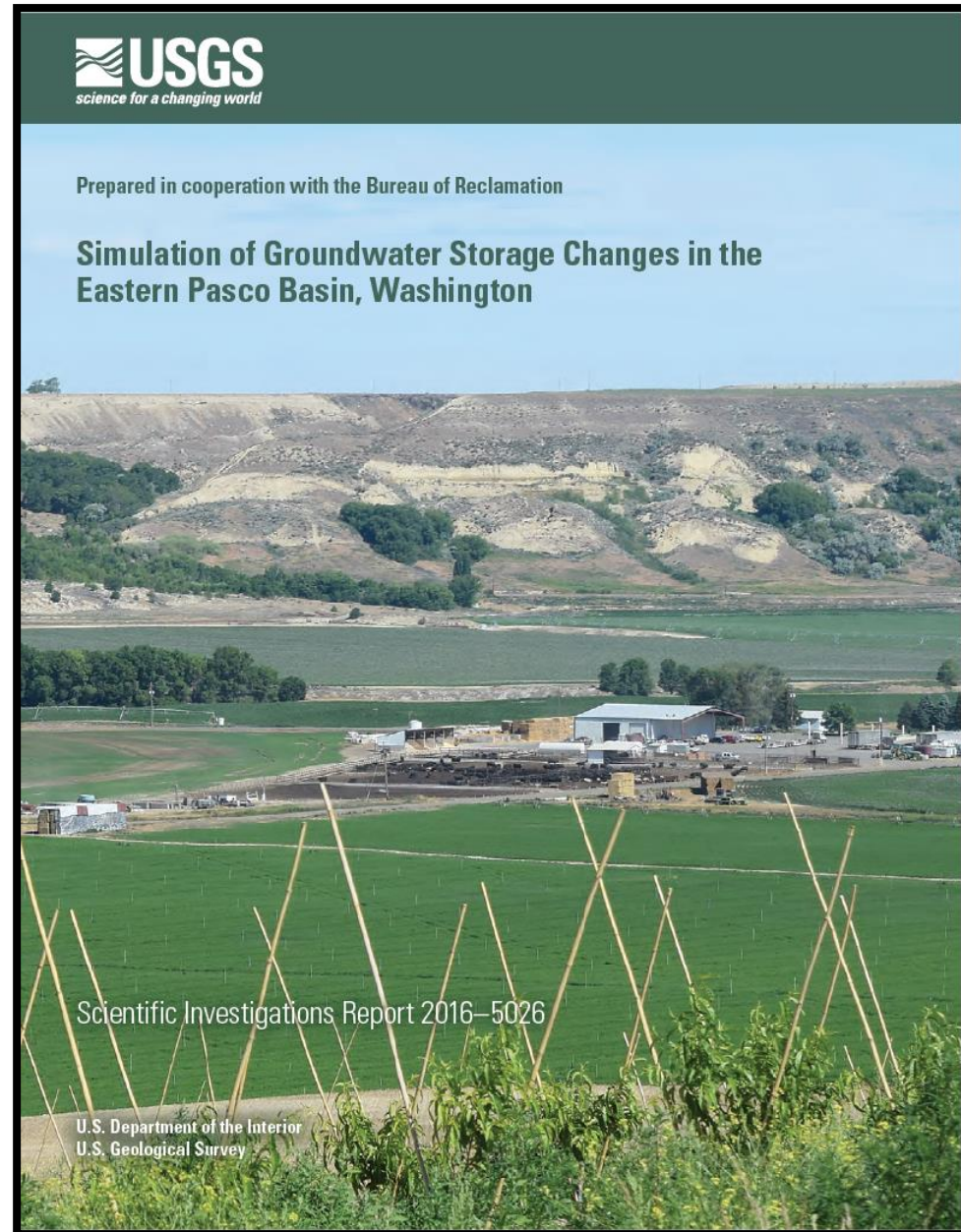
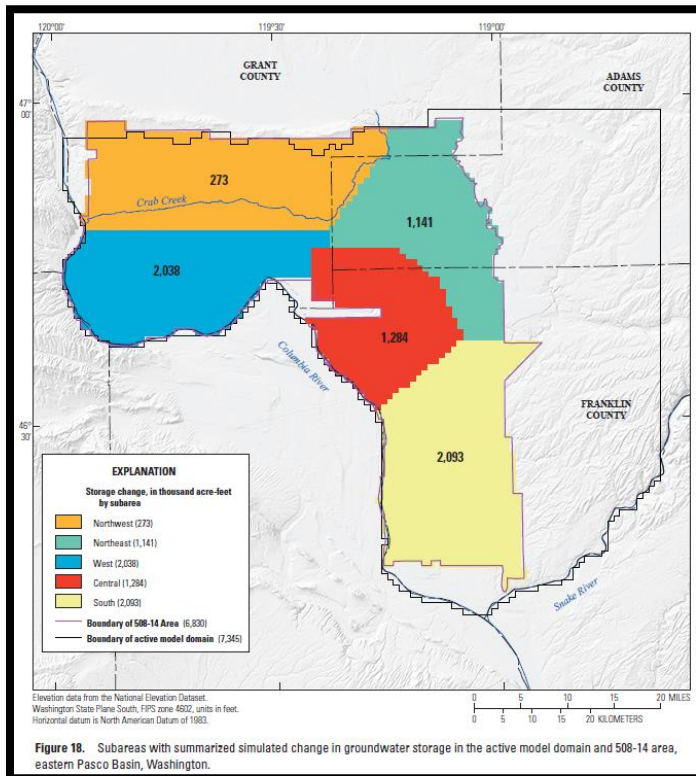
Adapted from DOI, Bureau of Reclamation Columbia Basin Project Map

Pasco Basin History

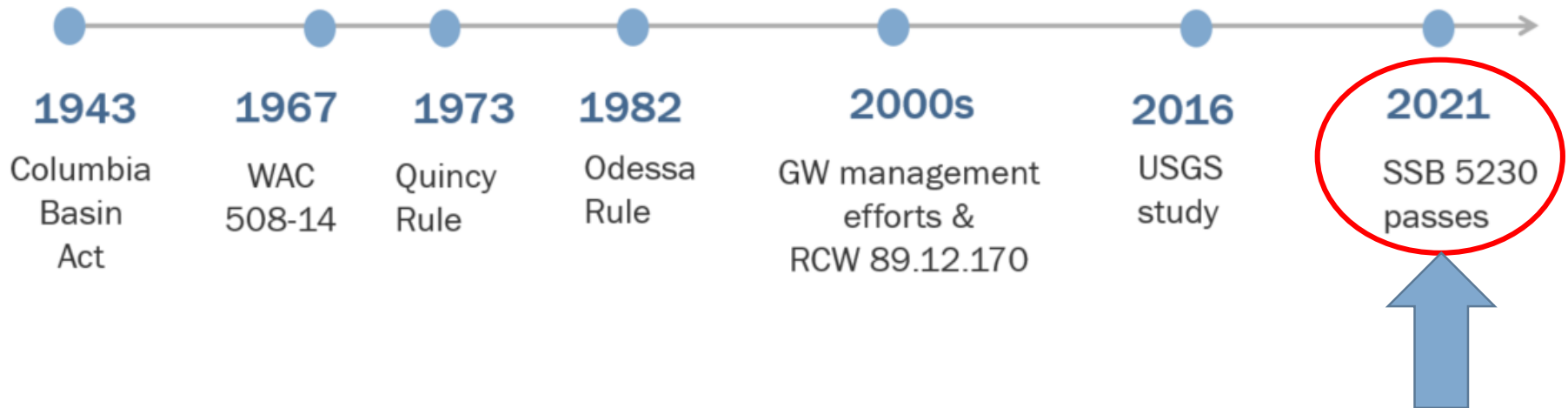


USGS Study and Groundwater Model

- 2016 USGS Report
- Increase in Groundwater Storage
- Model Updates/Revisions
- Management Scenarios

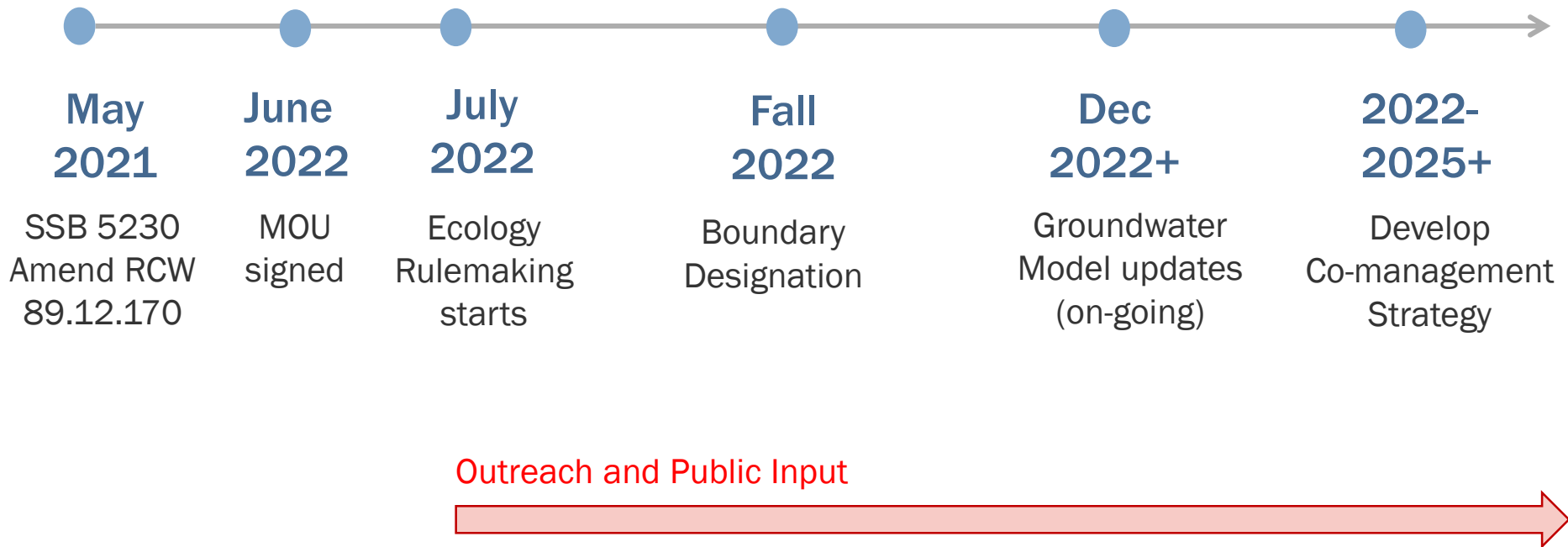


Pasco Basin History: 2021 Legislative Amendment



- Allocation through agreement of groundwater that exists as a result of the Columbia Basin Project
- Clarify process with subarea boundary designation under RCW 90.44.130
- Agreements fulfill requirements for groundwater availability
- Directs Ecology to conduct rulemaking including outreach

Current Efforts and Next Steps



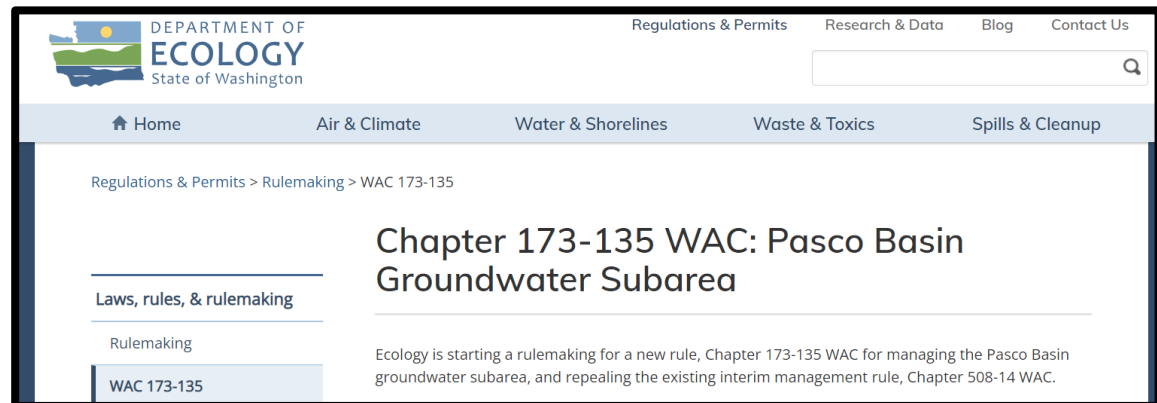
Memorandum of Understanding

- Agreement between Reclamation and Ecology to pursue groundwater co-management strategy
- Focus on public involvement and outreach and input
- Multi-step process for Groundwater Management:
 - Ecology Rulemaking and Outreach
 - Boundary Designation for Pasco Basin Groundwater Subarea
 - Groundwater Study and Groundwater Flow Model for Pasco Basin area
 - Co-management Agreement between Ecology and Reclamation for allocating and managing groundwater under RCW 89.12.170

Pasco Basin Rulemaking

Chapter 173-135 WAC

- RCW 89.12.170 directs Ecology to adopt a rule laying out the process for implementing the co-management agreement
- Rulemaking will result in a new rule Chapter 173-135 WAC and repeal of older interim rule Chapter 508-14 WAC
- Includes a review under State Environmental Policy Act (SEPA)
- Visit our website:



Boundary Designation

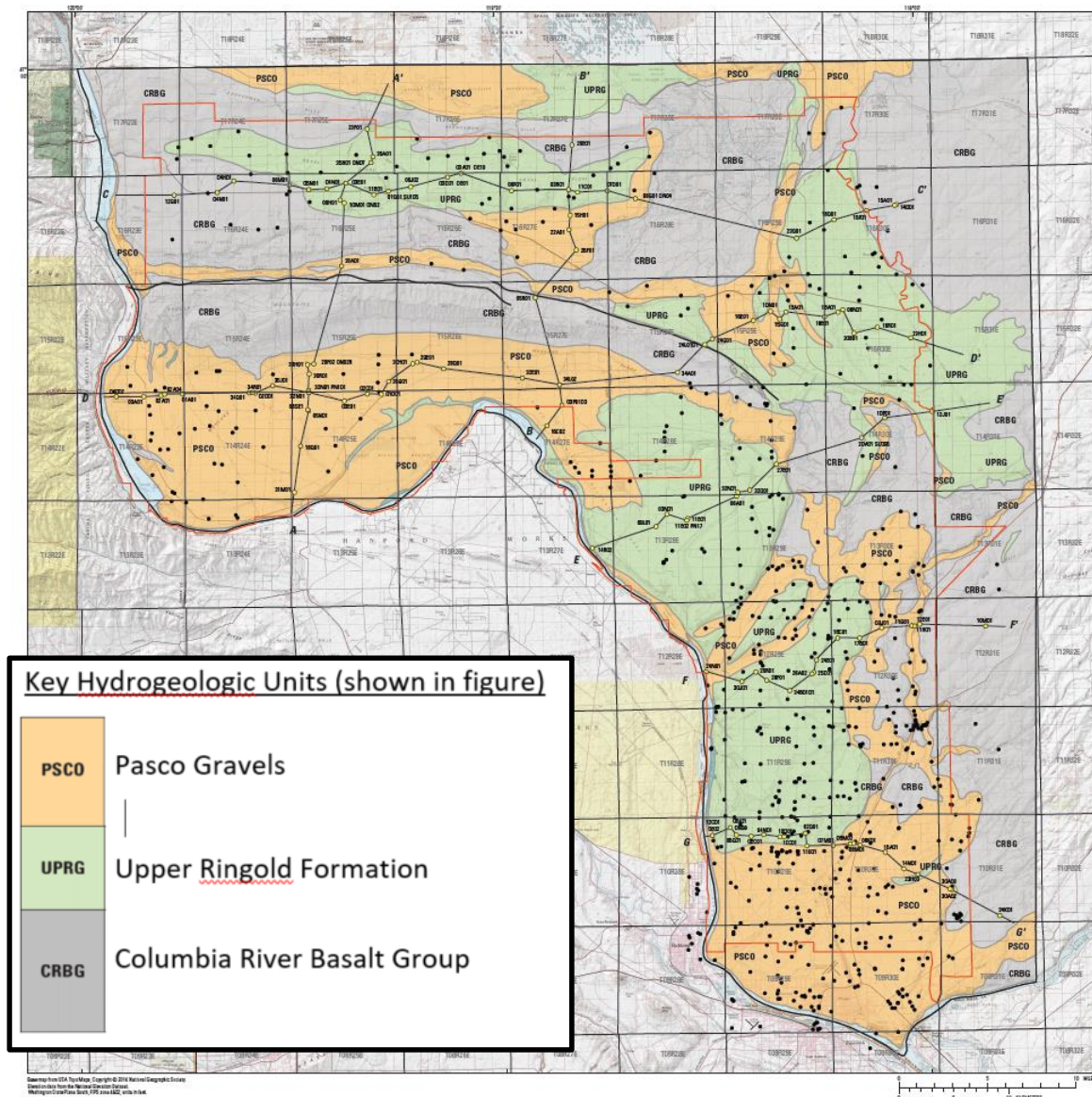
- Designate boundary under RCW 90.44.130
- Process: public notices, Ecology findings, and final order
- Boundary is defined by order, but volumes to be allocated within the boundary are determined through agreement and supported by groundwater studies



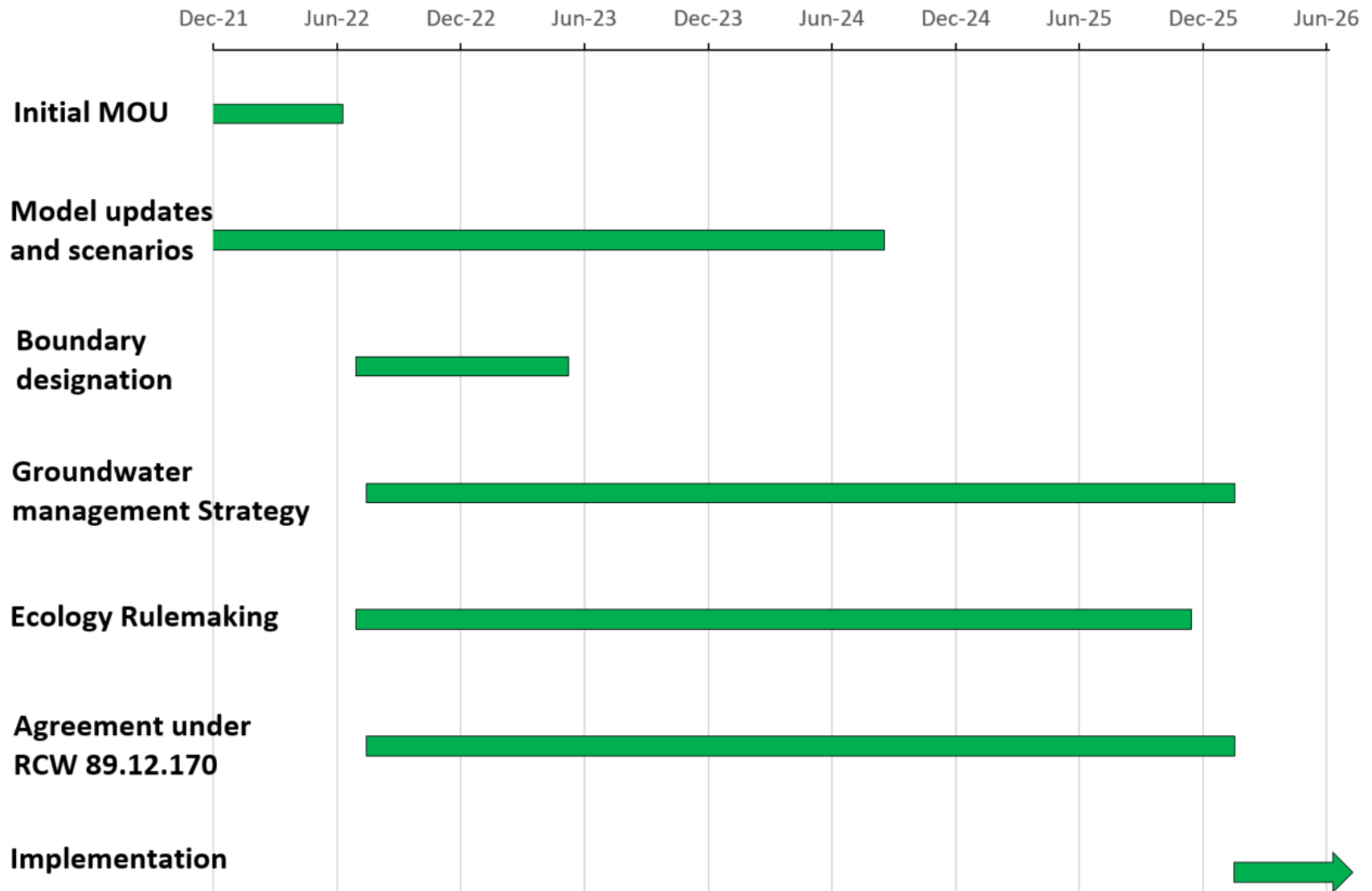
Outline of 508-14 area [filed 1986]

USGS Study and Groundwater Model

- Study seeks to quantify increases in groundwater storage as result of Columbia Basin Project return flows
- Majority of mounded water in sedimentary deposits that overlie the basalts
- Revisions and recalibration underway to update model
- Next steps: peer review and modeling scenarios to:
 - support development of co-management strategy
 - help inform agreement on groundwater allocation volumes and depth/location



Draft Schedule



Thank you!

Questions?

<https://ecology.wa.gov/Regulations-Permits/Laws-rules-rulemaking/Rulemaking/WAC-173-135>

gteb461@ecy.wa.gov