



OGWRP

Jon Erickson, Development Coordinator
East Columbia Basin Irrigation District
www.ecbid.org



Partners



— BUREAU OF —
RECLAMATION



DEPARTMENT OF
ECOLOGY
State of Washington



NRCS
Natural Resources Conservation Service



Columbia Basin
CONSERVATION DISTRICT



Washington State and US Legislators

Delivery Systems

EL 11.8 –

- ▷ 10.3 Miles of Pipe
- ▷ 60" - 44" size of pipe
- ▷ 45,830 GPM of aquifer water saved

EL 22.1 –

- ▷ 12.6 Miles of Pipe
- ▷ 90" – 36" size of pipe
- ▷ 97,900 GPM of aquifer water saved

EL 47.5

- ▷ 8.88 Miles of Pipe
- ▷ 60"-14" size of pipe
- ▷ 63,100 GPM of aquifer water saved

EL 80.6

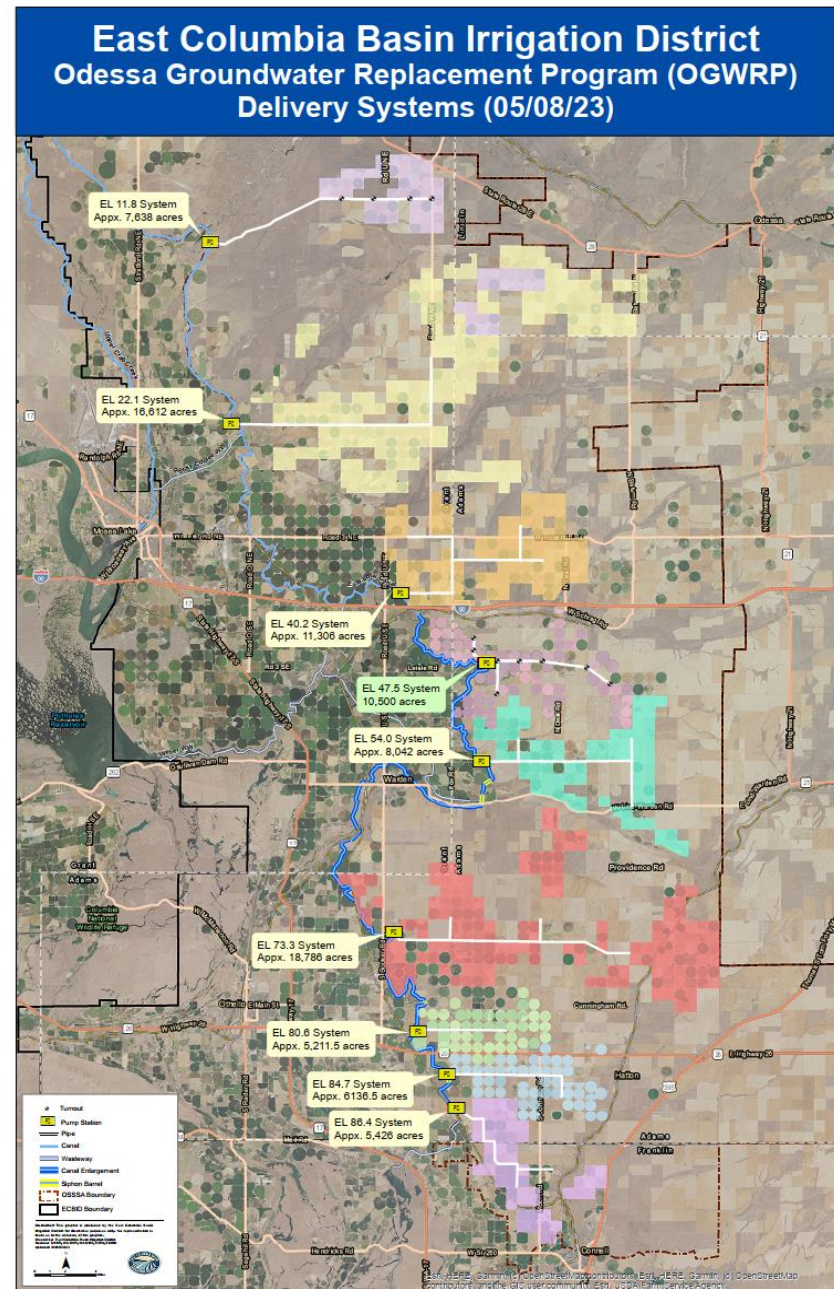
- ▷ 3.97 Miles of Pipe
- ▷ 48"-20" size of pipe
- ▷ 35,169 GPM of aquifer water saved

EL84.7

- ▷ 6.1 Miles of Pipe
- ▷ 48"-16" size of pipe
- ▷ 42,831 GPM of aquifer water saved

EL 86.4

- ▷ 7.4 Miles of Pipe
- ▷ 48"-18" size of pipe
- ▷ 32,560 GPM of aquifer water saved






Working with the Legislators



Washington State's Allocation of \$32.8 Million and Grant Signing



Partners and their Contributions

							
	WA Dept. of Ecology	Bureau of Reclamation	Natural Resources Conservation Service			ECBID	Landowners
			PL-566	RCPP	EQIP*		
Funding Type	State	Federal	Federal	Federal	Federal	Non-Federal Non-State	Private
What can the funds be spent on?	Main Pumping Plant & Pipeline	Support for Main Pumping Plant & Pipelines	Main Pumping Plant & Pipeline (100% for engineering; up to 75% for construction)	Public Works and On-Farm	On-Farm or Water Management Entity	Anything (except on-farm)	Anything
What the funding won't cover?	On-Farm Systems	<ul style="list-style-type: none">On-Farm SystemsConstructionFull Design	Electrical Infrastructure	Electrical Infrastructure	Electrical Infrastructure	On-Farm Systems	N/A
Are matching funds needed?	No	No	0% for engineering; 25% for construction	Depends on Notice of Funding Opportunity -	Yes - Varying % depending on Historically Underserved client status	No	No
Do the funds expire?	Yes – every 2 years	Yes – every 1 year	No	Yes – 5 years	Yes – At the end of the contract period	No	No
When are the funds requested?	Every 2 years	Every year	Once Plan is approved by Congress	When applying for grant	When applying for contract	After easement acquisition & WSC execution	N/A
Do you have to pay back the funds?	No	Depends – depending on the task the funds are spent on.	No	Only if contract violation occurs	Only if contract violation occurs	Yes	No
What has been funded thus far?	<ul style="list-style-type: none">• ELC Canal Widening (\$9M+)• 5 Siphons (\$24M +)• Radial Gates (\$650K+)• EL47.5 (\$5M)• EL22.1 (\$20M)• EL79.2 (\$15M+)• EL86.4, EL80.6, EL84.7, EL22.1, EL11.8 Delivery System Construction (\$32.8M)• Reclamation Support (\$850K)• CBCD Support (\$500K)	<ul style="list-style-type: none">• 5 Radial Gates (\$2.3M+)• Siphons Support (\$200K+)• EL47.5 Support (\$350K+)• EL11.8 (~\$50K)• EL80.6 (~\$250K)• EL84.7 (~\$250K)• EL86.4 (~\$75K)	<ul style="list-style-type: none">• Watershed Plan (\$1M)	<ul style="list-style-type: none">• EL80.6 & EL 84.7 On-Farm (\$6.M)• EL84.7 Landowner Extension Mainline (\$19.66M)• EL80.6 Landowner Extension Mainline (\$13.1M)• EL 86.4 On-Farm (\$7.2M)	<ul style="list-style-type: none">• EL47.5 (\$16M+)	<ul style="list-style-type: none">• EL11.8 (\$500K)• EL86.4 (\$150K)• EL80.6 (\$227K)• EL84.7 (\$161K)	

*EQIP is open sign up with annual reviews and contracting with the expectation that the +project will be installed within a year.



THANK YOU!

ANY QUESTIONS?

Jon Erickson, Development Coordinator

jerickson@ecbid.org

509-488-9671 x135

www.ecbid.org

