

---

# COLLABORATION WITH LANDOWNERS TO MEET ON-FARM NEEDS

Harold Crose



# ODESSA GROUNDWATER REPLACEMENT PROGRAM

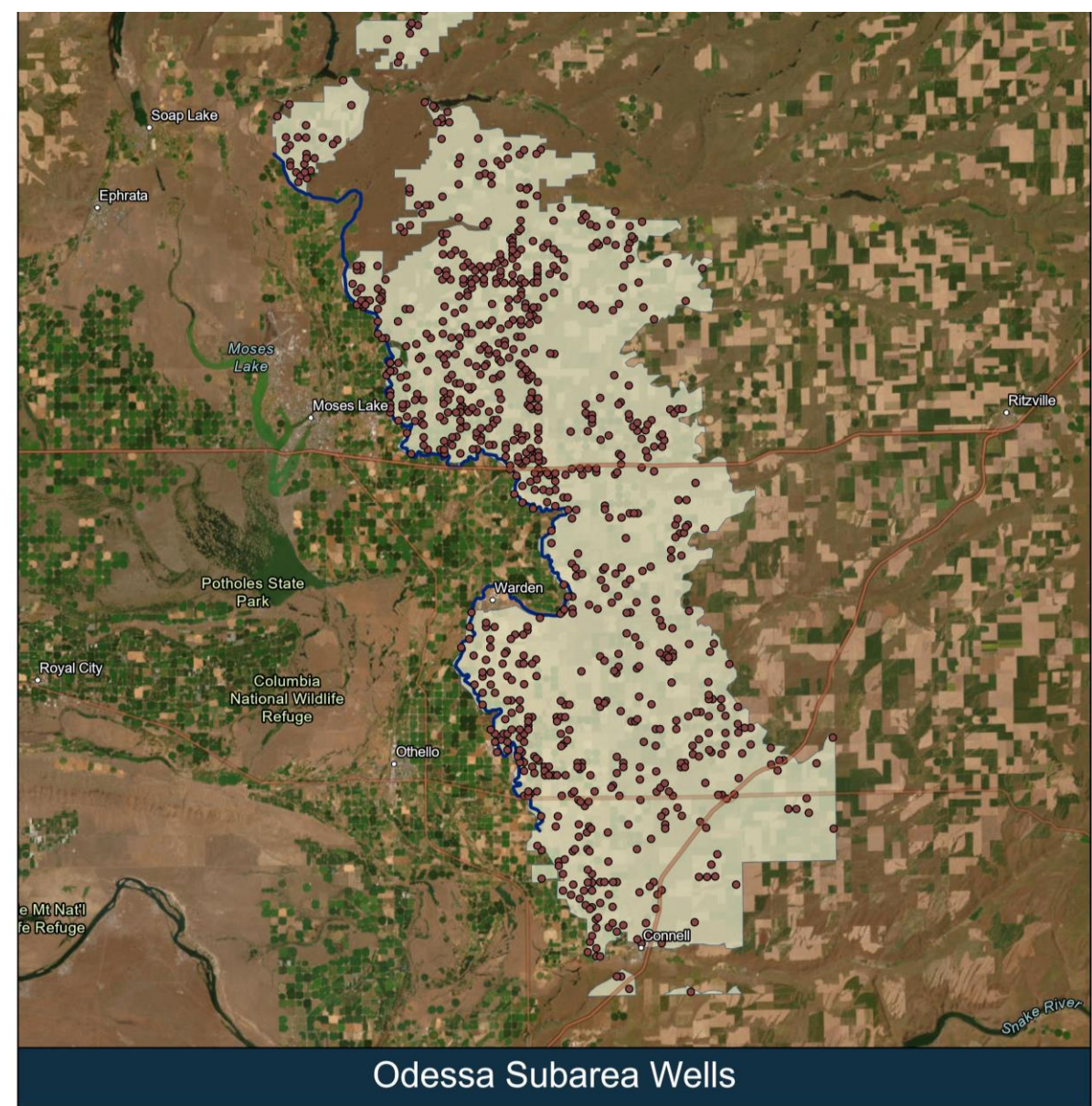




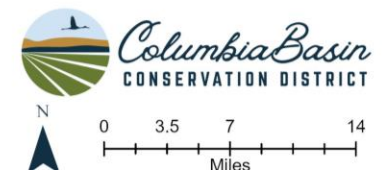
---

# OBJECTIVE

## Groundwater Protection



- 
- Odessa Subarea Special Study Area
  - East Low Canal
  - Washington Department of Ecology Wells



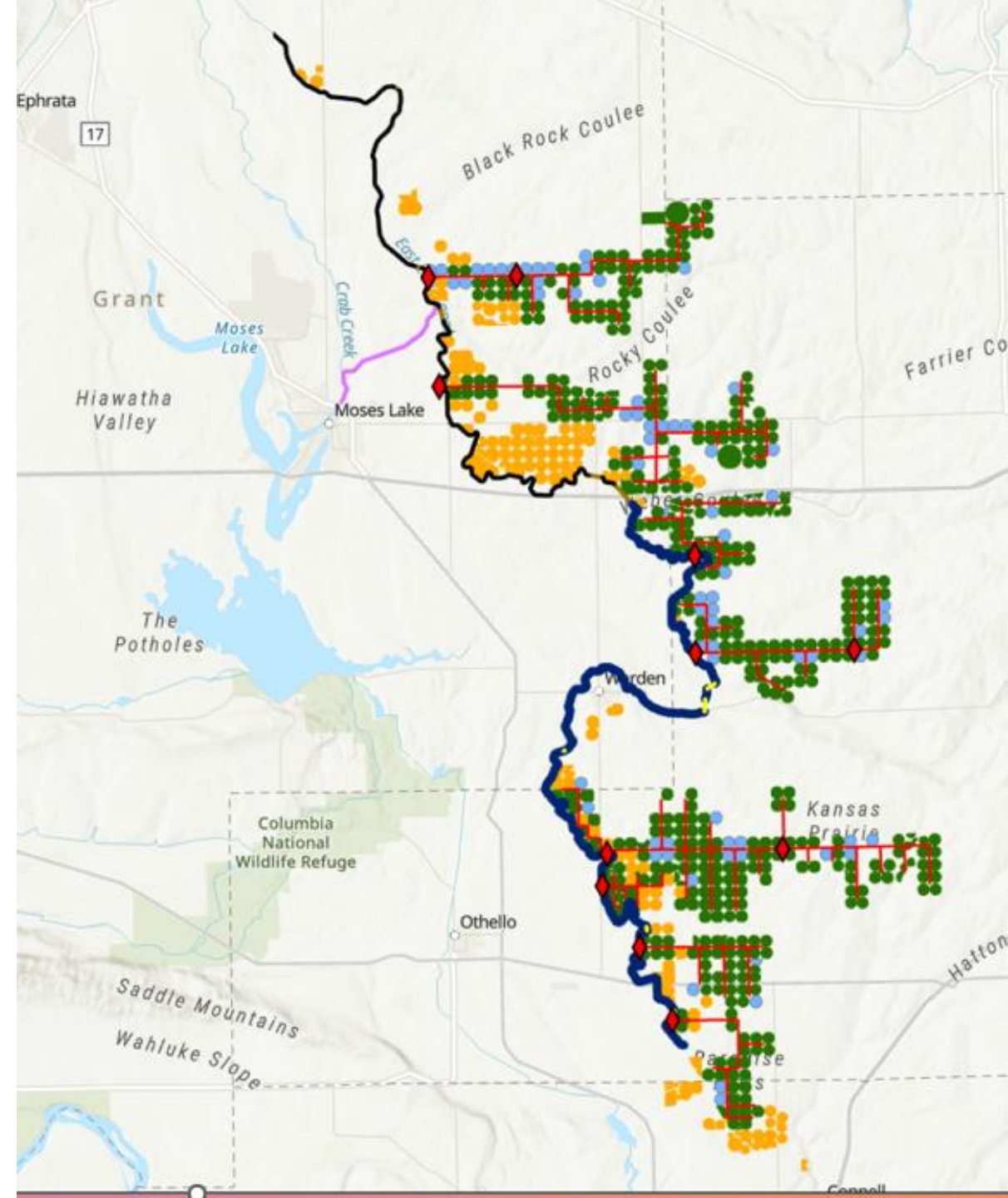
---

# LATERALS PUMP STATIONS

---

Subtitle

---





---

# PRODUCER SIGNUP RCPP

---



---

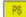






# ON FARM IRRIGATION SYSTEM REORGANIZATION

Subtitle

---



## On Farm Irrigation System Reorganization

- |  |  |
|--|--|
|  Pump Station |  Project Area       |
|  Turnouts     |  Conservation Cover |
|  Mainline     |  Planned Pipe       |
|  |  Planned Pumps      |



# TABLE

Regional Conservation Partnership Program							
On Farm Practice - Extent - Benefits							
Laterals 80.6 – 84.7							
Farm Name	New Pumps	Number of Wells Comming Off-line	New Pivots	New Mainline (ft)	Acres	ac-ft H2O Saved/yr	Pipe Cost
1	1	2	4	13,240	1180	3540	225,080
2	1	3	0	23,082	775	2325	392,394
3	1	1	0	19,566	745	2235	332622
4	1	2	4	18,270	680	2040	310,590
5	6	7	1	16,100	2550	7650	273700
6	1	2	1	5280	2700	8100	89,760
7	1	0	1	1320	450	1350	22,440
8	1	1	1	12,500	600	1800	212,500
9	1	1	1	4390	790	2370	74,630
10	1	2	4	3600	460	1380	61200
11	1	1	2	8860	250	750	150620
Totals	16	22	19	126,208	11180	33540	2,145,536
Total gallons saved annually = 10,929,042,540 Gal/yr							
average transfer benefits 3ac-ft/ac/yr							

ECBID Lateral		
Lateral	New Mainline (ft)	Est Cost (\$)
80.6 - 84.7	56664	15,264,600





---

# SUMMARY

Vision

Communication

Commitment





---

# THANK YOU

Harold Crose, Columbia Basin Conservation District [harold-crose@columbiabasincd.org](mailto:harold-crose@columbiabasincd.org)